

TripTix®

Product Announcement

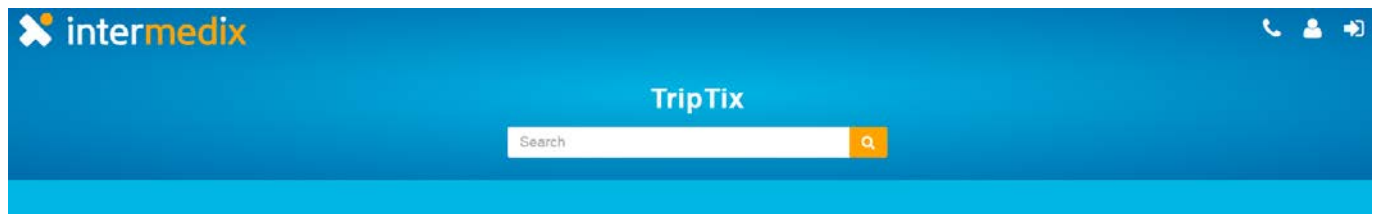
Version 4.1.5

This announcement describes changes made to the TripTix Windows and CDX platforms for the 4.1.5 release. More information on these changes is available through the [Client Hub](#) or by contacting your Client Relations Manager.

New Help Resource

New Online Help Through the Client Hub

From within your TripTix/CDX Web systems or directly via the Internet, you can now access help articles, product announcements, QRGs, and more from the [TripTix/CDX Client Hub](#). The Hub is a website for storing and organizing information about TripTix so you can have 24/7 access to technical documentation, FAQs, and other reference materials whenever you need them.



Administration

New Filters for Advanced Searches

To make searching for records easier, both **File Type** and **File Name** have been added as filter fields when performing an advanced search on the *Records Exchange: History* page.

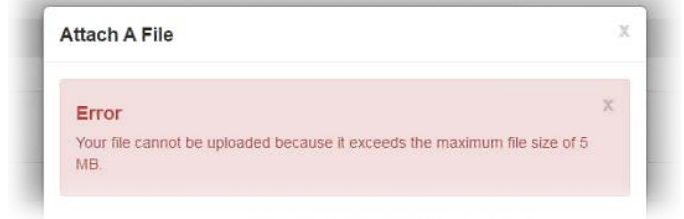
New City Name Column

A new **City Name** column has been added to the **CAD** table in order to store the city name from TripTix 3. The **City Name** column data is sent in CAD calls for those agencies and organizations using the TripTix REST API.

Streamlined Management of TripTix Documents

To avoid the upload of files that are too large to be viewed, a new system setting option limits the size of file uploads to 5 MB. The system maximum is 25 MB, but you can request an adjustment to this maximum if applicable.

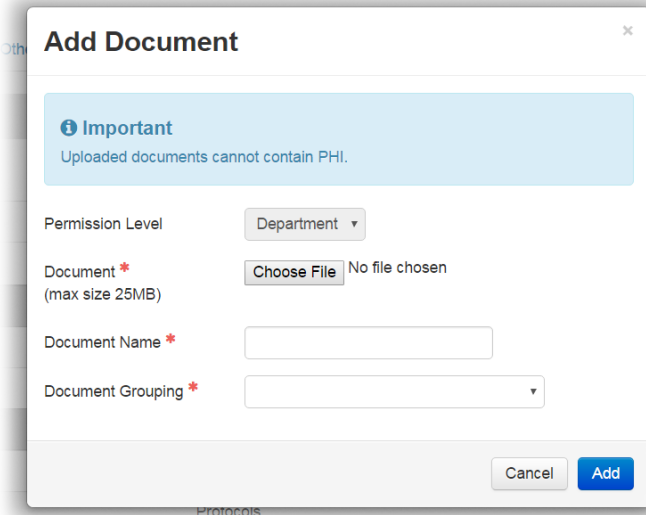
If you or another user attempts to upload an attachment to a run record that exceeds this maximum size, you receive an error message alerting you to the restriction.



Additionally, your system administrator can specify which file extensions are permitted when users upload attachments to a run record. This setting ensures only the proper types of files are being included. By default, only **.pdf** files are accepted.

Lastly, a new user interface exists for uploading global and department documents. This new interface allows you to specify a document's permission level, name, and grouping.

As a precaution to ensure HIPAA compliance when adding documents, an informational message reminds you not to upload a document containing protected health information (PHI).



Reduced Startup Time Even if Poor Connectivity

When in areas with low Internet connectivity, TripTix Windows will continue to start up in an appropriate and efficient manner.

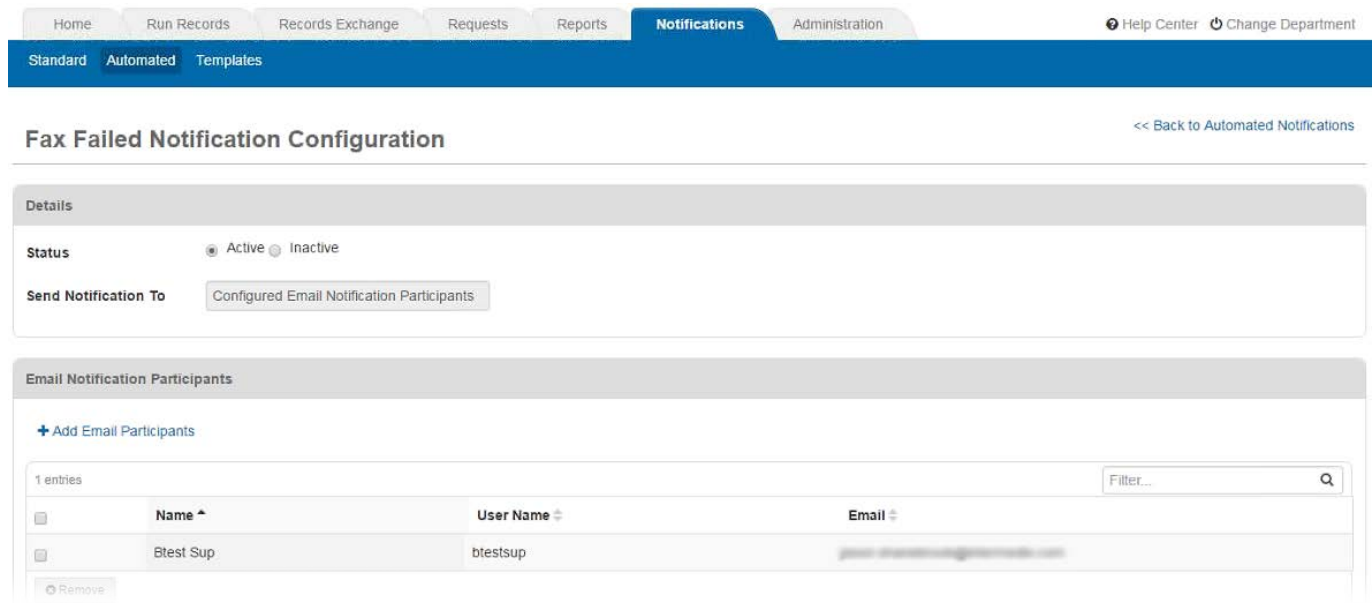
Improved Page Rendering and Loading Times

Changes were made within the CDX platform to allow for faster loading of ePCR and System Settings pages.

Improved Failed Fax Notifications

Fax notifications now indicate why a fax failed so you can take the necessary steps toward resolving the issue.

Additionally, department administrators can control who receives an email notification for a failed fax. By default, all department managers and supervisors receive an email when a run record fails to fax appropriately. This can be changed, however, in the **Notifications: Automated** tab. From here, department administrators can turn off these notifications altogether, or they can select specific supervisors from the list to receive individual notifications of a failed fax.



Home Run Records Records Exchange Requests Reports **Notifications** Administration Help Center Change Department

Standard Automated Templates

Fax Failed Notification Configuration

<< Back to Automated Notifications

Details

Status ☒ Active ☐ Inactive

Send Notification To Configured Email Notification Participants

Email Notification Participants

+ Add Email Participants

1 entries Filter...

	Name ^	User Name ^	Email ^
	Btest Sup	btestsup	btestsup@intermedix.com

Remove

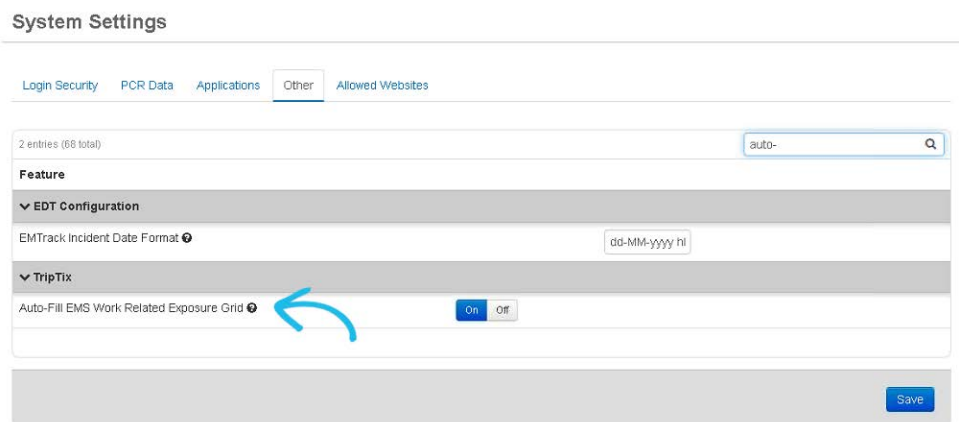
Added an Exposure System Setting

You can now allow your EMS crew members to more quickly document potential EMS injuries and exposures encountered on a run.

If an exposure did not occur, which is most often the case, you can configure it so all crew

members on a call are automatically added to the **EMS Work-related Exposure** table.

Furthermore, you can set defaults for the **PPE**, **Suspected**, and **Type** fields, so medics do not have to manually complete all these fields when most calls do not involve exposures.




System Settings

Login Security PCR Data Applications **Other** Allowed Websites



2 entries (66 total) auto-

Feature

▼ EDT Configuration

EMTrack Incident Date Format  dd-MM-yyyy hi

▼ TripTix

Auto-Fill EMS Work Related Exposure Grid   ☒ On ☐ Off

Save

Run Record

Enabled Auto-population of the Work-related Exposure Table

If enabled by your department administrator, the **Work-related Exposure Table** in the *Outcome* section of the run record will automatically populate with default values.

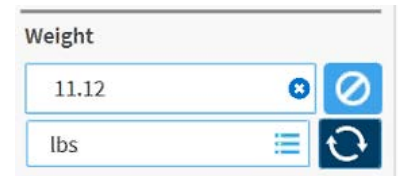
Each crew member included in the run record is automatically added to the table, and any default values will accompany the entry. For example, your department may always require gloves to be documented as PPE. Additionally, **No** may be the default for **Suspected**, and **Other** may always be the most common exposure **Type**.



Crew Member (ID)	PPE	Suspected	Type
John (AEMT, 11111)	Gloves	No	Other
John (AEMT, 00000)	Gloves	No	Other

Allowed Two Decimal Points for Weights

To allow for more specific weight entries, especially for pediatric patients for whom exact weights are needed when calculating weight-based medication dosages, you can now enter weights to the hundredths decimal place.



Added Select All Option When Copying ePCRs

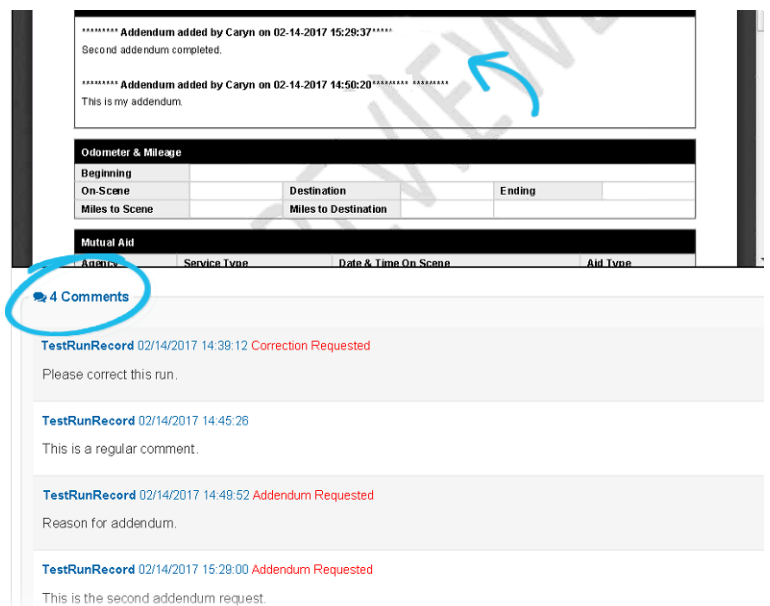
When choosing to copy an ePCR in TripTix Windows, you can now tap a **Select All** button to copy all possible data available from the previous record into the new record.

Improved Comment Tracking for Pending Review Runs

All comments are now tracked and listed throughout the run record review process.

Not only is a summary of all comments listed when you add a comment, but they also appear in the PDF of the run record.

This tracking creates further transparency and helps you identify previous comments that may be helpful or applicable to your current review.



***** Addendum added by Caryn on 02-14-2017 15:28:37*****
Second addendum completed.

***** Addendum added by Caryn on 02-14-2017 14:50:20*****
This is my addendum.

Odometer & Mileage		
Beginning	Destination	Ending
On Scene	Miles to Destination	
Miles to Scene		

Mutual Aid			
Agency	Service Type	Date & Time On Scene	Aid Type

4 Comments

TestRunRecord 02/14/2017 14:39:12 **Correction Requested**
Please correct this run.

TestRunRecord 02/14/2017 14:45:26
This is a regular comment.

TestRunRecord 02/14/2017 14:49:52 **Addendum Requested**
Reason for addendum.

TestRunRecord 02/14/2017 15:28:00 **Addendum Requested**
This is the second addendum request.